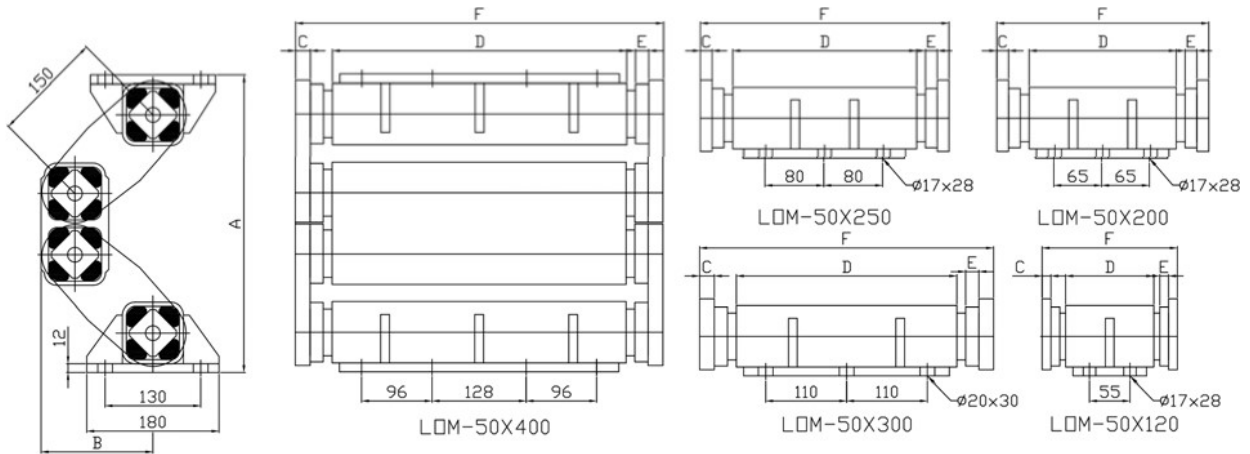


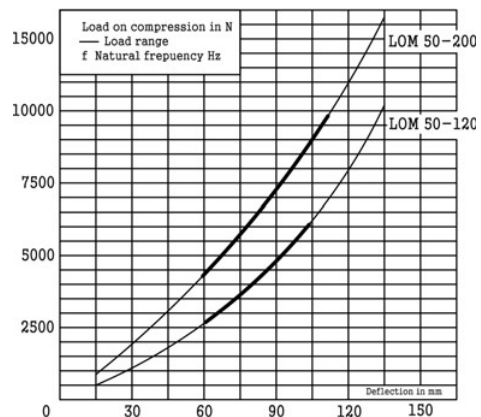
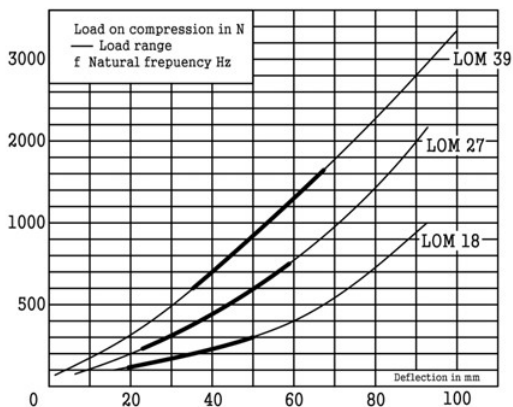
Anti Vibration Mountings

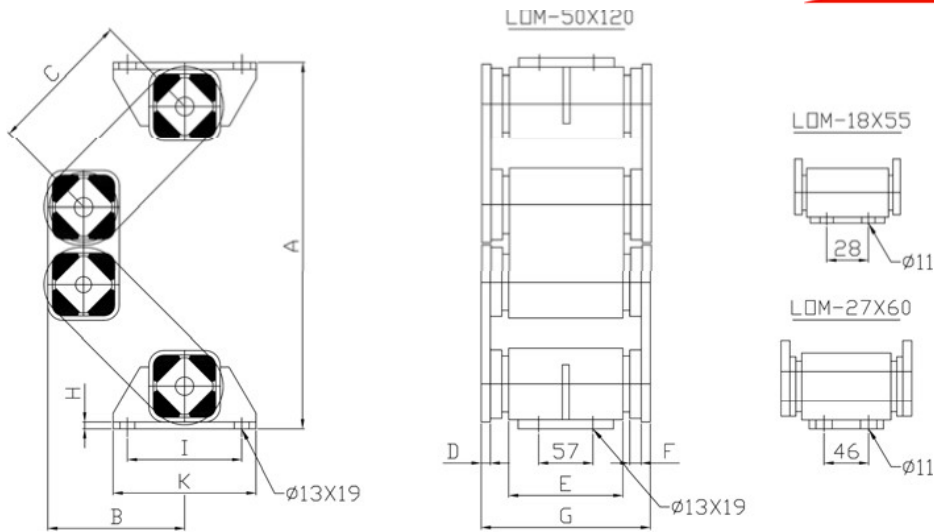
Type LOM



Size	G	A Un-loaded	A Max-loaded	B Un-loaded	B Max-loaded	C	D	E	F
LOM 50×120	2500-6000	400	300	152	182	12	120	12	184
LOM 50×200	4200-10000	400	300	152	182	16	200	16	288
LOM 50×250	5200-12300	400	300	152	182	16	250	16	338
LOM 50×300	6200-15000	400	300	152	182	20	300	18	400
LOM 50×400	8300-19500	400	300	152	182	20	400	18	500

* G = Load capacity in N





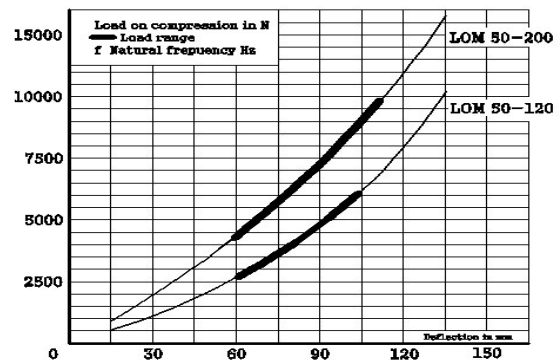
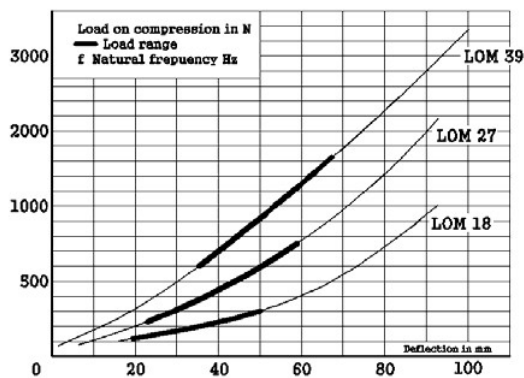
Size	G	A Un-loaded	A Max-loaded	B Un-loaded	B Max-loaded	C	D	E	F	G	H	I	K
LOM 18×55	120-320	214	160	87	107	100	5	55	0	71	4	60	80
LOM 27×60	250-800	244	184	94	114	100	6	60	4	88	5	80	105
LOM 39×100	670-1800	321	250	120	144	125	8	100	10	148	8	105	135
LOM 39×120	800-2160	321	250	120	144	125	8	120	10	148	8	105	135

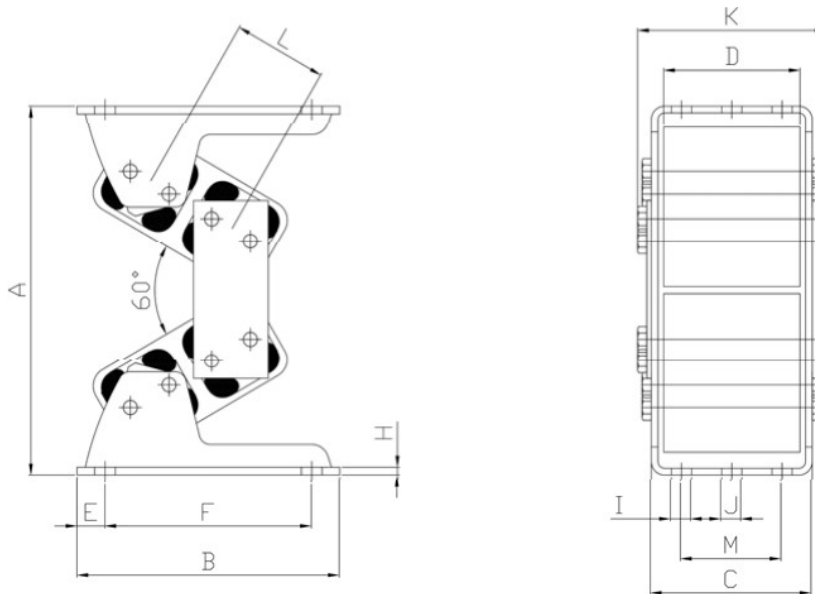
G = Load capacity in N per mount

Material Structure

Cd	LOM 18	LOM 27	LOM 39	LOM 50×120	LOM 50×200	LOM 50×250	LOM 50×300	LOM 50×400
수직	18	40	70	190	320	390	470	630
수평	14	25	35	85	140	175	210	280

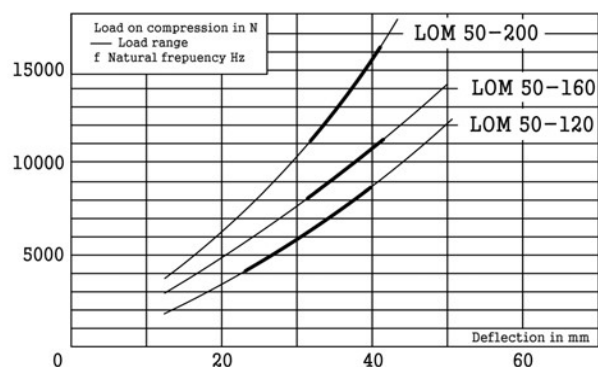
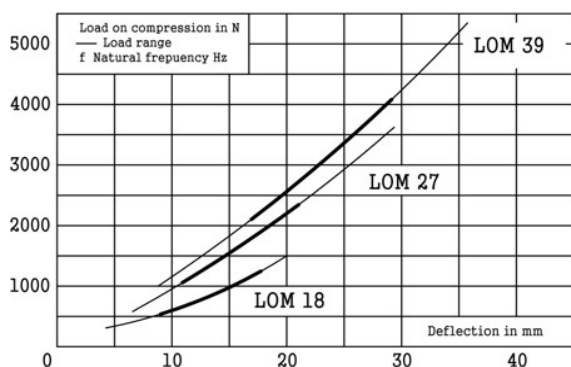
* Cd= Dynamic spring valve in N/mm, in nominal load range at Ne = 960 min⁻¹, sw= 8mm





Size	G	A Un-loaded	A Max-loaded	B	C	D	E	F	H	I	J	K	L	M	무게 (kg)
LOM 18×55	500-1200	139	119	115	61	50	12.5	90	4	9	9	74	31	30	1.4
LOM 27×60	1000-2500	186	159	150	93	80	15	120	5	9	11	116	44	50	3.0
LOM 39×100	2000-4000	245	210	185	118	100	17.5	150	6	11	13.5	147	60	70	7.8
LOM 50×120	4000-9000	330	279	235	142	120	25	185	8	13.5	18	166	78	90	22.0
LOM 50×160	8000-12000	330	279	235	186	160	25	185	8	13.5	18	214	78	90	25.5
LOM 50×200	11000-16000	330	279	235	226	200	25	185	8	13.5	18	260	78	90	29.0

* G = Load capacity in N per mount



This drawing is confidential property of LAUTEC CO. and disclosure, reproduction and copy of all or part of the drawing without written consent of LAUTEC CO. is prohibited. All rights including patent and copyright are reserved.